

 SafeBreach Recorded Future®

JOINT SOLUTION BRIEF

Prioritize the Most Critical Threats: Operationalize Threat Intelligence with BAS

Empower your security team with visibility into the evolving threat landscape and the ability to rapidly operationalize threat detection and response—powered by the SafeBreach breach and attack simulation (BAS) platform—with Recorded Future Threat Intelligence.



Security teams are constantly engaged in a complex battle to protect the enterprise from evolving threats delivered by innovative tactics, techniques, and procedures. To stay ahead of these threats, security teams need timely and streamlined threat intelligence for actionable insights. Enterprise security tools aim to use threat intelligence to speed up threat detection and response; however, differences in the way each tool operationalizes threat intelligence can create gaps or misconfigurations that attackers can exploit.

The joint solution from SafeBreach and Recorded Future combines continuous security validation from the SafeBreach breach and attack simulation (BAS) platform with Recorded Future's threat intelligence, to provide a comprehensive way for security teams to ingest the latest threat intelligence, validate and visualize their exposure, and prioritize remediation actions to prevent breaches.



How the Integration Works

SafeBreach works with Recorded Future to ingest contextual threat intelligence and match existing Hacker’s Playbook attacks with the indicators of compromise (IOCs) and techniques, tactics, and procedures (TTPs) of the threat actors shown on Recorded Future’s ThreatMap. Security teams can also use SafeBreach to create customized attacks based on any relevant IOCs and TTPs provided by Recorded Future that suit their organization’s needs. This enables security teams to effectively evaluate their current security control performance against the ever-changing threat landscape.

Benefits of the Integration



Discover – Easily create new, customized attacks based on any specific IOCs and TTPs relevant to the organization provided by Recorded Future



Validate – Continuously validate and optimize organizational security control performance against the evolving threat landscape leveraging TI provided by Recorded Future



Prioritize – Prioritize vulnerability remediation and your SafeBreach test results based on their overall risk to the business

USE CASE 1

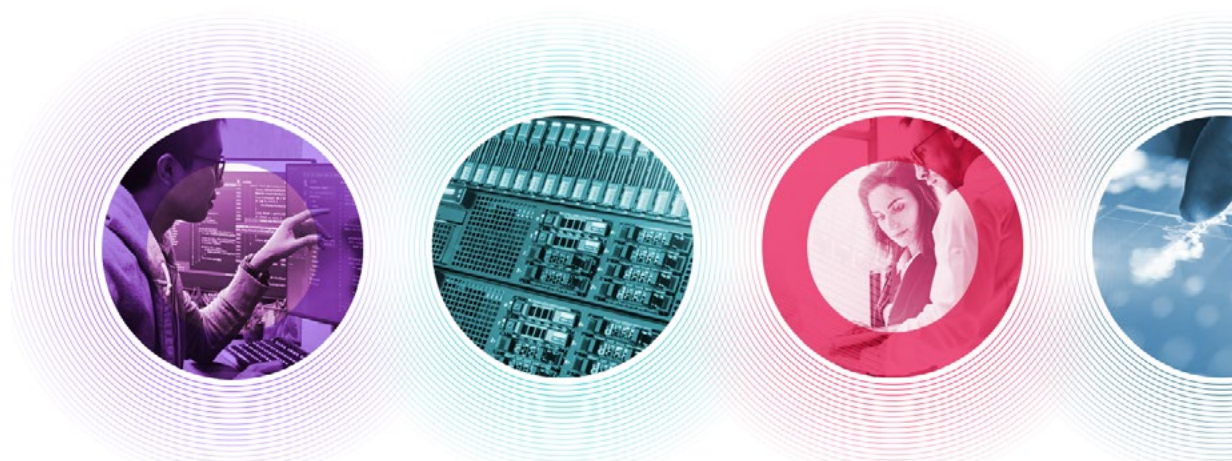
Comprehensive Understanding of the Threat Landscape

Challenge

Threat intelligence can be a powerful asset for security teams, providing them with an understanding of the global threat landscape and enabling them to protect their organization from advanced threats. However, operationalizing threat intelligence can be difficult since not all security teams have the necessary expertise and capabilities to contextualize and integrate threat intelligence into their existing security controls. Without specialized capabilities, it is also hard to gain insights into an attacker's intent or measure the impact of specific threats on an organization's security posture.

Solution

Recorded Future connects billions of entities in real-time automatically by collecting data across adversaries, their infrastructure, and the organizations they target. Threat data is dynamically linked and analyzed in real-time to provide actionable insights about attacker intent. SafeBreach integrates with Recorded Future to correlate IOCs and TTPs with existing attacks from our industry-leading Hacker's Playbook™, adding valuable context that can not only help analysts understand the scope of the attack but also determine the best way to remediate the threat. SafeBreach also makes it easy for security teams to create new, customized attack simulations based on any relevant IOCs or TTPs related to the organization, so they can understand and optimize their security control performance against evolving threats.



USE CASE 2

Validate and Improve the Efficacy of Your Security Operations

Challenge

Security operations (SOC) teams are constantly battling to protect their enterprise against evolving adversarial tactics. To make informed detection, prioritization, and remediation decisions, the SOC needs threat intelligence data. The dynamic nature of the threat landscape can create many indicators of compromise (IoCs) that can be ingested ineffectively across a range of security controls. Threat intelligence provides valuable contextual and actionable insights that improve the efficiency of threat detection and response by filtering the noise and prioritizing threats that require immediate attention. But not all sources of threat intelligence are equal. Improperly operationalized intelligence can generate a lot of false positives, causing valuable information to be buried amongst the noise, reducing analyst efficiency, increasing missed detections, and raising organizational vulnerability.

Solution

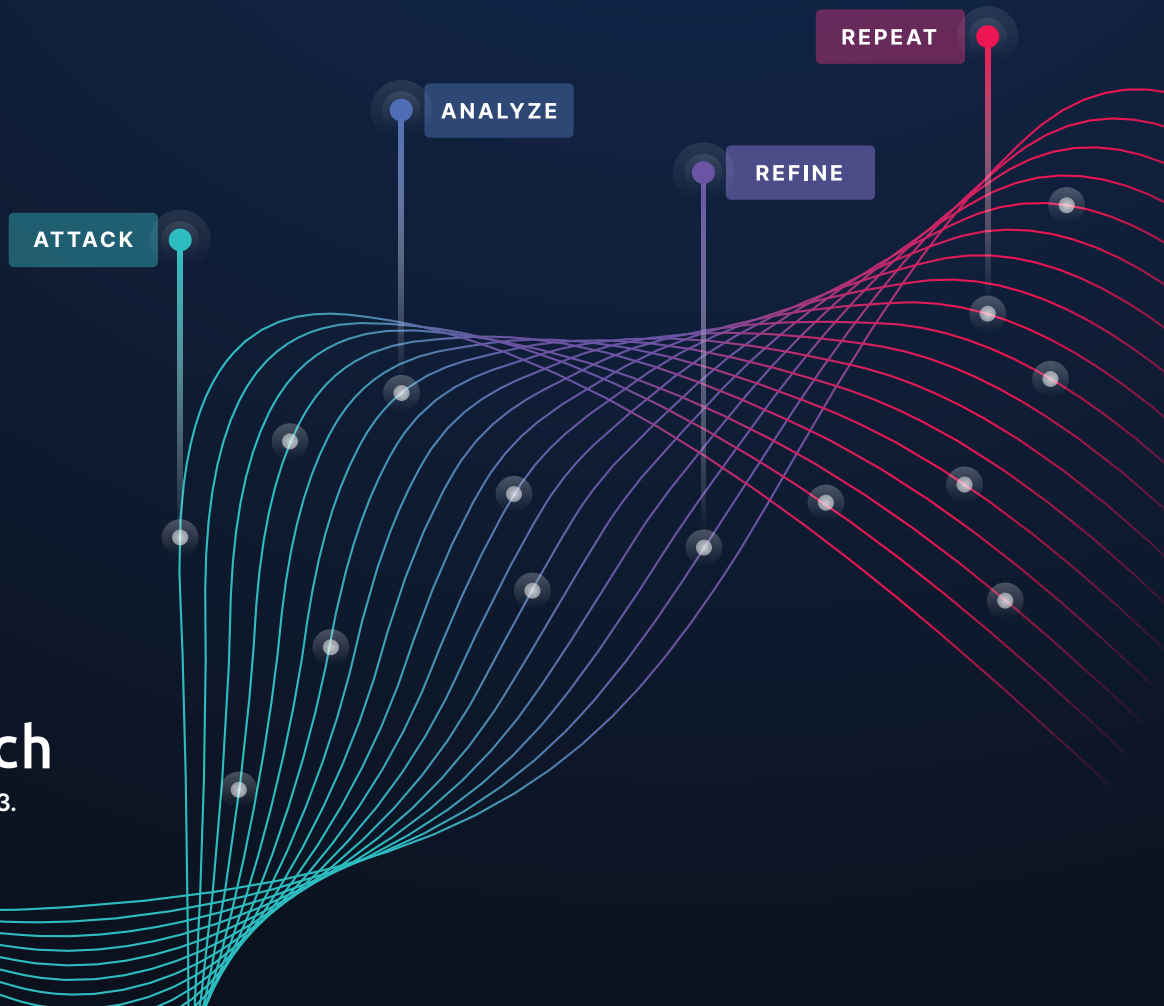
SafeBreach offers the industry's largest continuously updated attack playbook (25k+ attacks) and a 24-hour SLA to add newly identified attacks from US-CERT and FBI Flash alerts. When combined with the ability to create customized attacks using Recorded Future's contextual threat Intelligence, security teams can easily and continuously validate deployed security control efficacy against evolving threats. Teams can use these validation results to identify any changes to the baseline organizational security posture and create alert rules to not only reduce alert fatigue but also reliably and dynamically identify posture drift in the future. This allows your security teams to accelerate threat detection, prioritization, and response and ensure a hardened security posture.

About SafeBreach

Combining the mindset of a CISO and the toolset of a hacker, SafeBreach is the pioneer in breach and attack simulation (BAS) and is the most widely used continuous security validation platform. SafeBreach continuously executes attacks, correlates results to help visualize security gaps, and leverages contextual insights to highlight remediation efforts. With its Hacker's Playbook™, the industry's most extensive collection of attack data enabled by state-of-the-art threat intelligence research, SafeBreach empowers organizations to get proactive about security with a simple approach that replaces hope with data.

About Recorded Future

Recorded Future is the world's largest threat intelligence company. Recorded Future's Intelligence Cloud provides end-to-end intelligence across adversaries, infrastructure, and targets. Indexing the internet across the open web, dark web, and technical sources, Recorded Future provides real-time visibility into an expanding attack surface and threat landscape, empowering clients to act with speed and confidence to reduce risk and securely drive business forward. Headquartered in Boston with offices and employees around the world, Recorded Future works with over 1,600 businesses and government organizations across more than 74 countries to provide real-time, unbiased and actionable intelligence. Learn more at recordedfuture.com.



 **SafeBreach**

All content © SafeBreach 2023.
All rights reserved.